

## Firing Pin Separation and Comparison

Perazzi shooters have mentioned on discussion boards about failures to fire with some being caused by Firing Pin Separation. This document will serve to document the appearance of Firing Pin Separation, how to fix it and alternatives available to shooters.

As background, firing pins on Perazzi guns are a two piece construction. The small diameter that strikes the primer is made of harder steel than the outer body. The outer body is struck by the hammer and it is designed to not damage the receiver as it travels forward and the primer is ignited.

Examine Pic #1 and Pic #2 below, these two pictures show the most visible indicators of Firing Pin Separation. In pic #1, we see the rear of a firing pin and a visible concentric circle. The small concentric circle is the back part of the part that strikes the primer. The larger body of the firing pin has been struck by the hammer so many times it has worn such that the small part is visible. This firing pin should be changed immediately. Pic #2 shows a small oval "racetrack" shape in the recess for the firing pin lock pin. This also indicates that the two pieces are separating and this firing pin should be replaced.

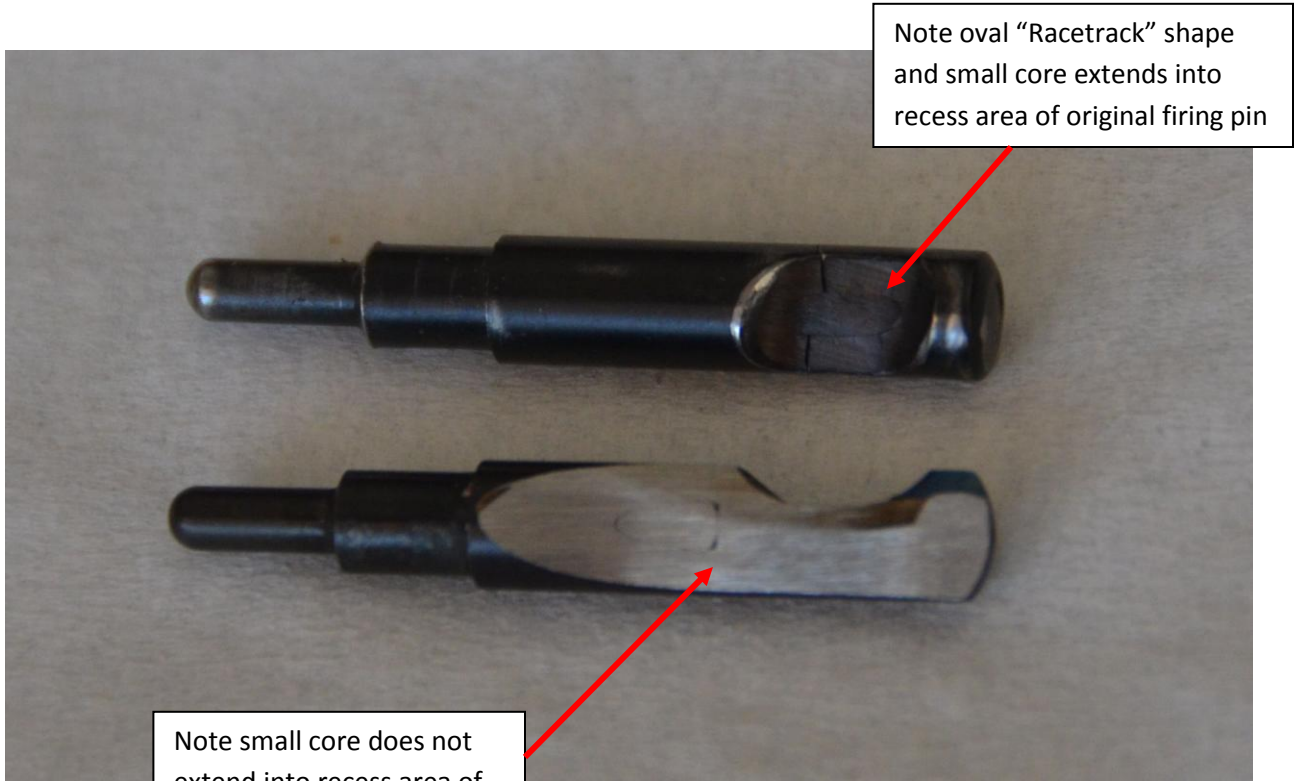


Pic 1



Pic 2

Pic #3 shows a comparison of a Perazzi firing pin that is separating and a new Giuliani firing pin that has been ground to reveal the internal construction. Note that the original firing pin has separated in a manner similar to Pic #2 above. Note on the Giuliani firing pin inner core does not extend back to the recess for the firing pin lock pin, so the small core is compressed against a considerable thicker piece of the larger firing pin body.



Note oval "Racetrack" shape and small core extends into recess area of original firing pin

Note small core does not extend into recess area of Giuliani firing pin

Pic #3